

The Kensey

No. 3 & 6

Faced with traditional stone, The attractive 'Kensey' offers a spacious family home with accommodation comprising three bedrooms, master en-suite, a spacious lounge and a kitchen diner enjoying French doors out onto the rear garden patio, as well as a ground floor WC and family bathroom. Externally this home enjoys off-road parking, garage and enclosed rear garden.

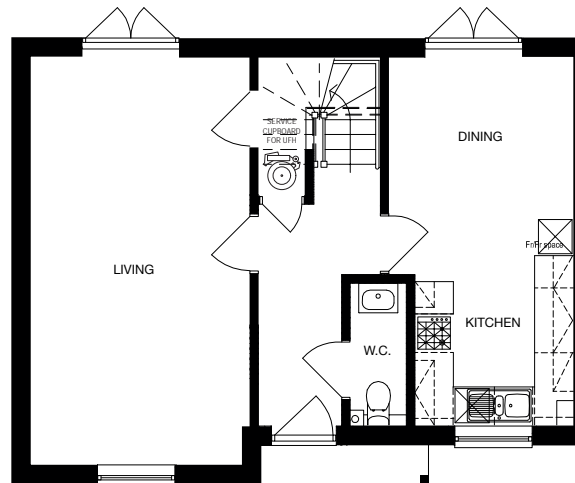


Ground Floor

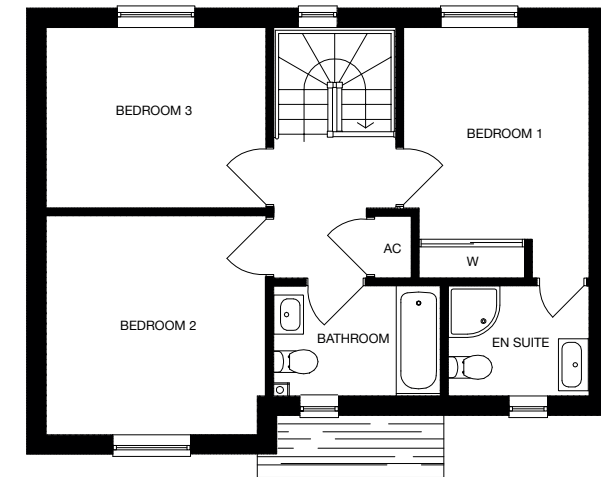
Entrance hall
Cloakroom
Kitchen / Dining
2.83m x 5.56m (9'3" x 18'2")
Lounge
3.26m x 6.17m (10'8" x 20'2")

First Floor

Bedroom 1
2.83m x 3.07m (9'3" x 10'0")
En suite
Bedroom 2
3.14m x 3.39m (10'3" x 11'1")
Bedroom 3
3.26m x 2.66m (10'8" x 8'8")
Bathroom



Ground Floor



First Floor