

# The Tonnow

## No. 4

The Tonnow is a semi-detached home and is an ideal choice for a growing family. Inside, there's a large kitchen/dining room which overlooks the garden, a very spacious lounge, and there's also a separate WC. On the first floor there are three double bedrooms (one with ensuite) and a family bathroom.



### Ground Floor

Entrance hall

Cloakroom

Kitchen / Dining:

2.83m x 5.56m (9'3" x 18'2") max

Lounge:

3.26m x 5.56m (11'10" x 18'2") max

W/C:

### First Floor

Bedroom 1:

2.83m x 3.07m (9'4" x 10'0") max

En Suite

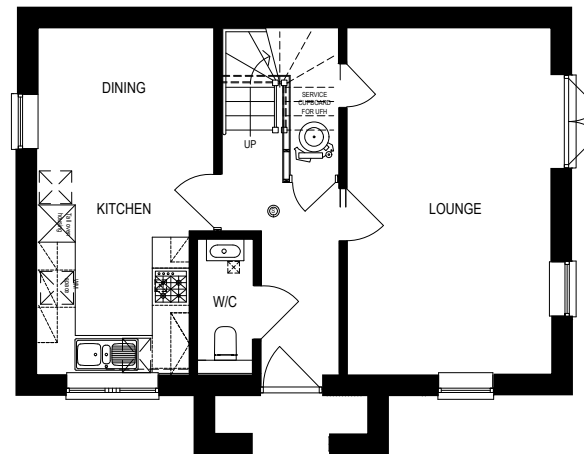
Bedroom 2:

3.14m x 2.79m (10'3" x 9'1") max

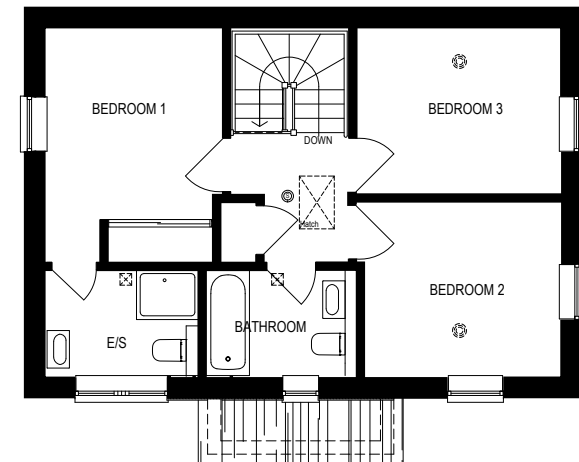
Bedroom 3:

3.26m x 2.66m (10'8" x 8'8") max

Bathroom:



Ground Floor



First Floor

All measurements given are approximate, for further details please contact the agents. Dimensions given are done so in good faith and before construction has commenced. They are approximate and for guidance only and should not be used for furniture or appliance purchases. Purchasers are strongly advised to confirm actual dimensions when the property is nearing completion or is completed.